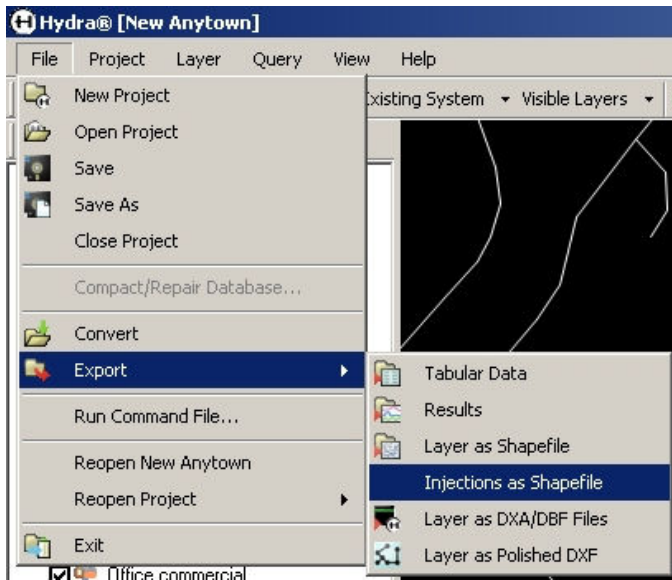


Version 7.1 Newest Features

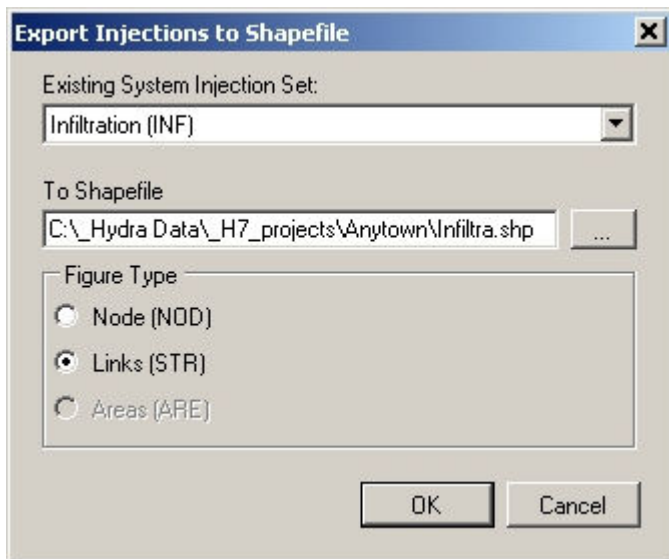
Nov 2016 Update: Hydra Interface 7.1.12.0

Export of Injections to Shapefiles

Now you can export tabular data from layer Injection Sets to a GIS Shapefile. In the **File** menu, under **Export**, select **Injections as Shapefile**.



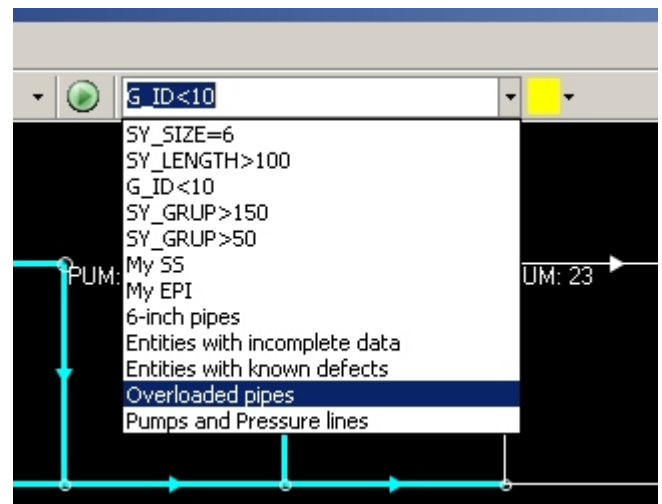
Select one injection set associated with the active layer, and selection a file location and name for the Shapefile:



As soon as you click the OK button, the injection set Shapefile will be created.

Saved Selection Sets in pull-down

Now all types of Selection Sets will be easily accessible from the drop-down combo box above the Plan Window: 1) Quick Queries (ie, SY_SIZE=6) previously typed directly into the combo box, 2) Selection Sets saved to the internal database, and 3) Selection Sets saved to an external file.



Click the down arrow to see the list, and click on the name of the Selection Set to have it display in the Plan Window.

Check Data error messages improved

We have done a thorough review of Check Data error messages that report on missing data or data outside the expected range, and have edited the messages reported to make them more clear and consistent.

NOTE: If you ever see an error message in Hydra that you don't understand, please report it, so we can change the language to be more clear.

Please let us know what new features you would like to see included in the next software update.